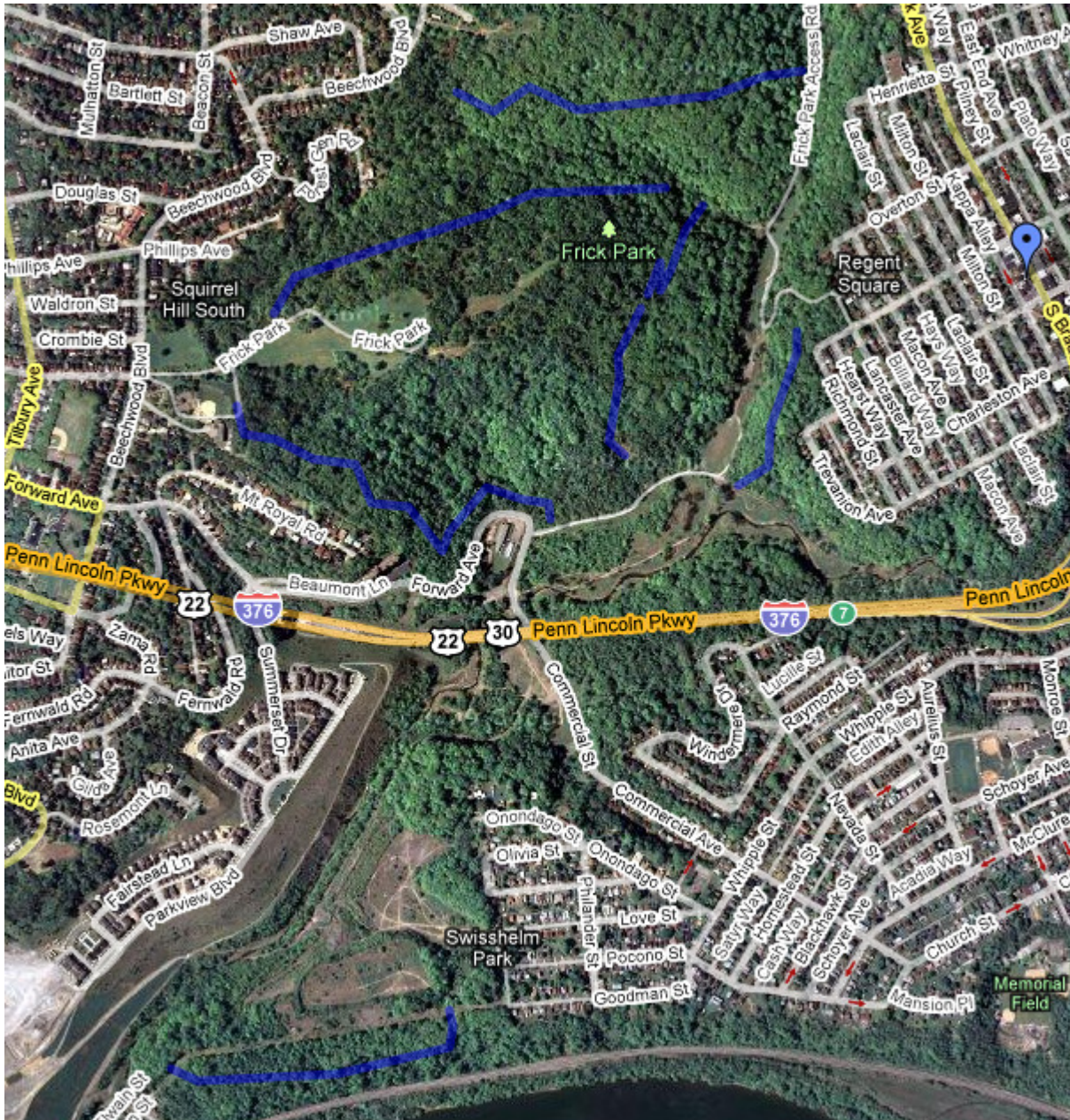
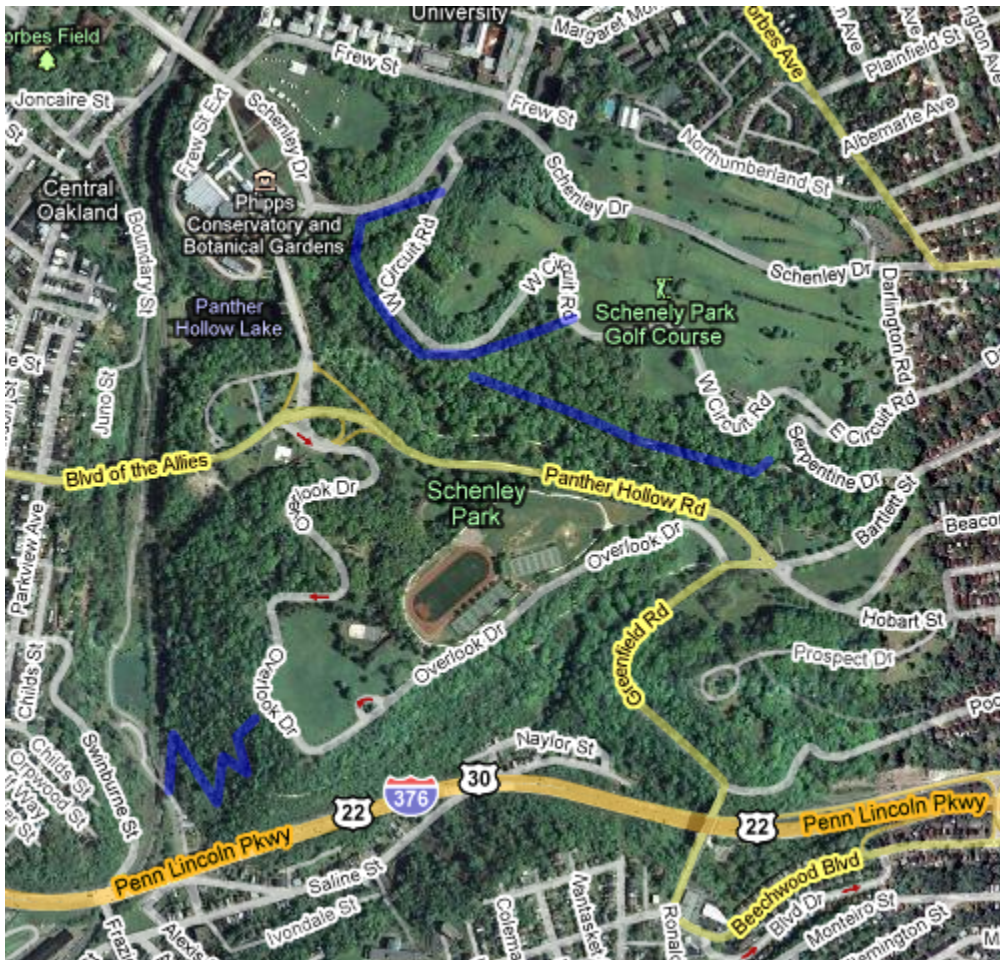


Frick Park:



1. Slag Heap Loop (loop along ridge overlooking waterfront), west to east (the river on your right) (Frick Park)
2. “Beginning” Trail, uphill from 9 Mile Run Trail to Biddle Trail (Frick Park)
3. Zig-Zag Trail, uphill from Falls Ravine Trail to Lower Riverview (Frick Park)
4. Roller Coaster, downhill from Lower Riverview to Fire Lane Ext. (Frick Park)
5. Iron Gate Trail, uphill from Tranquil Trail (?) to the baseball diamond (Frick Park)
6. Bench Trail, downhill from the Fitnessse Circuit to Riverview Extension (Frick Park)
7. Nature Trail singletrack, uphill from Tranquil Trail to Nature Trail (Frick Park)

Schenley Park



8. Steve Faloon Trail, downhill from W. Circuit Road to pavilion near the intersection of W. Circuit Road & Schenley Drive (Schenley Park)
9. Creek Trail, “uphill” from the Panther Hollow lake to the fireroad near the playground (Schenley Park)
10. Panther Hollow descent, downhill from Schenley fireroad to Panther Hollow (Schenley Park to Panther Hollow)